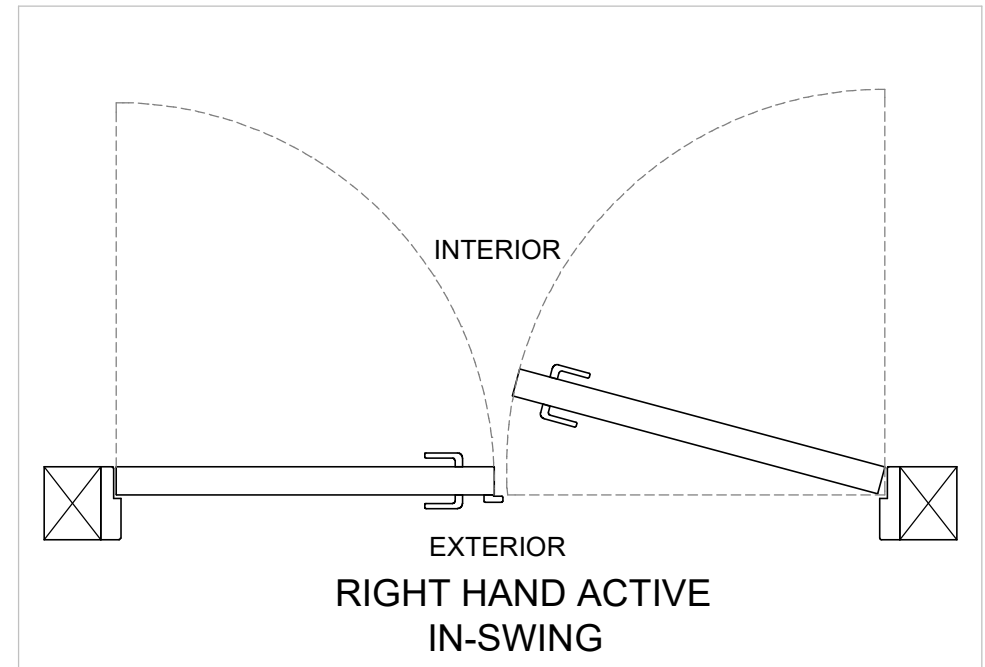
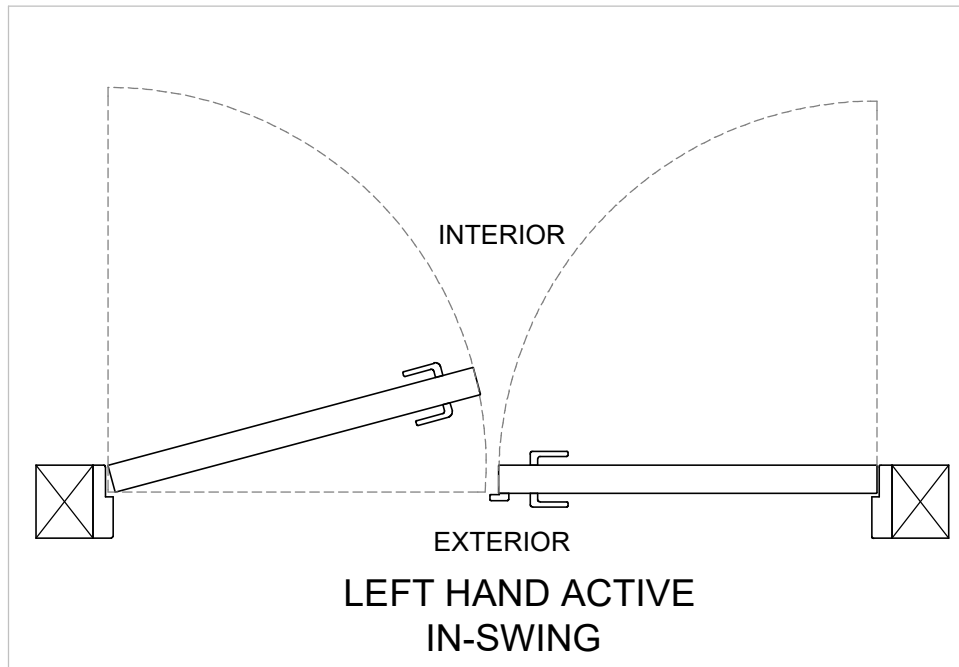
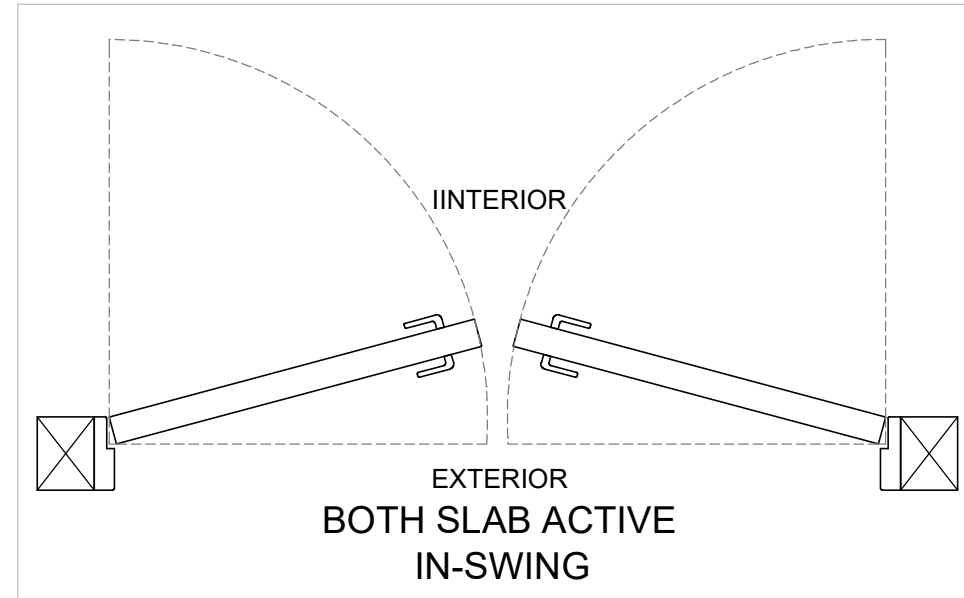
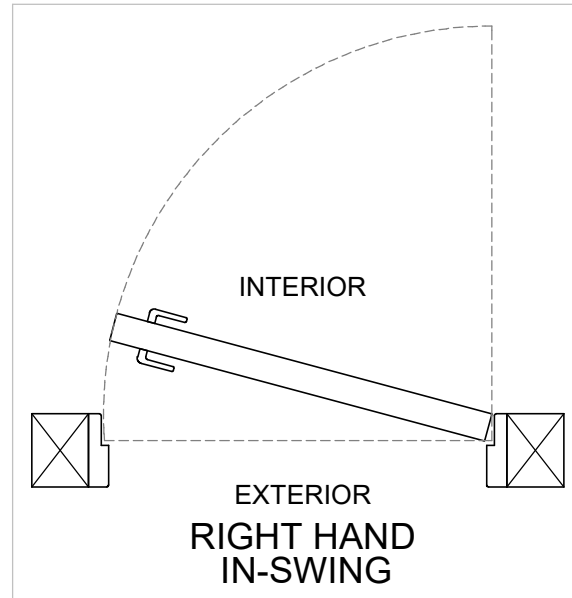
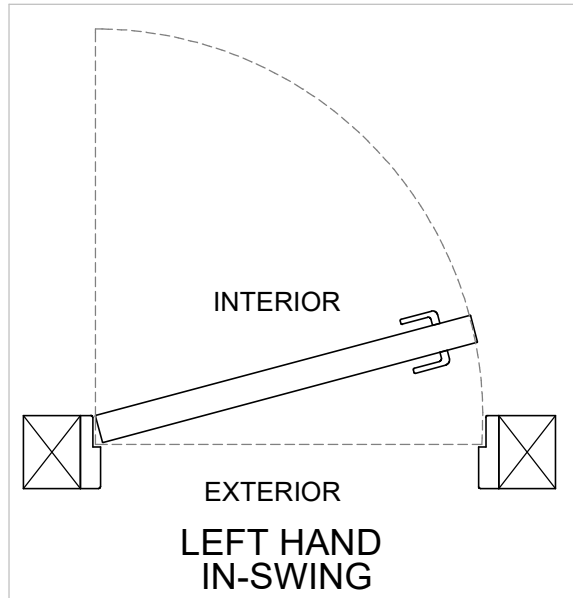
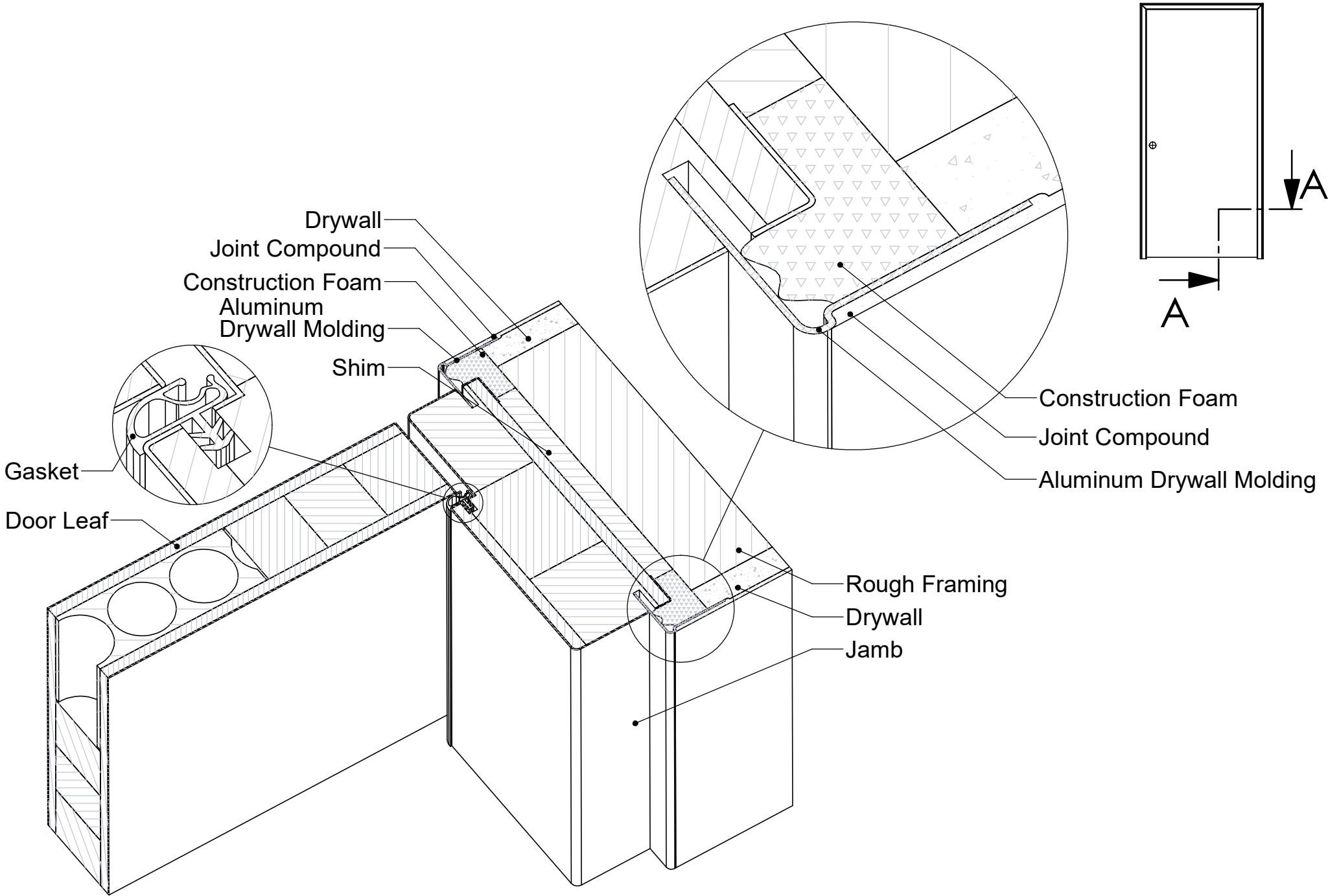


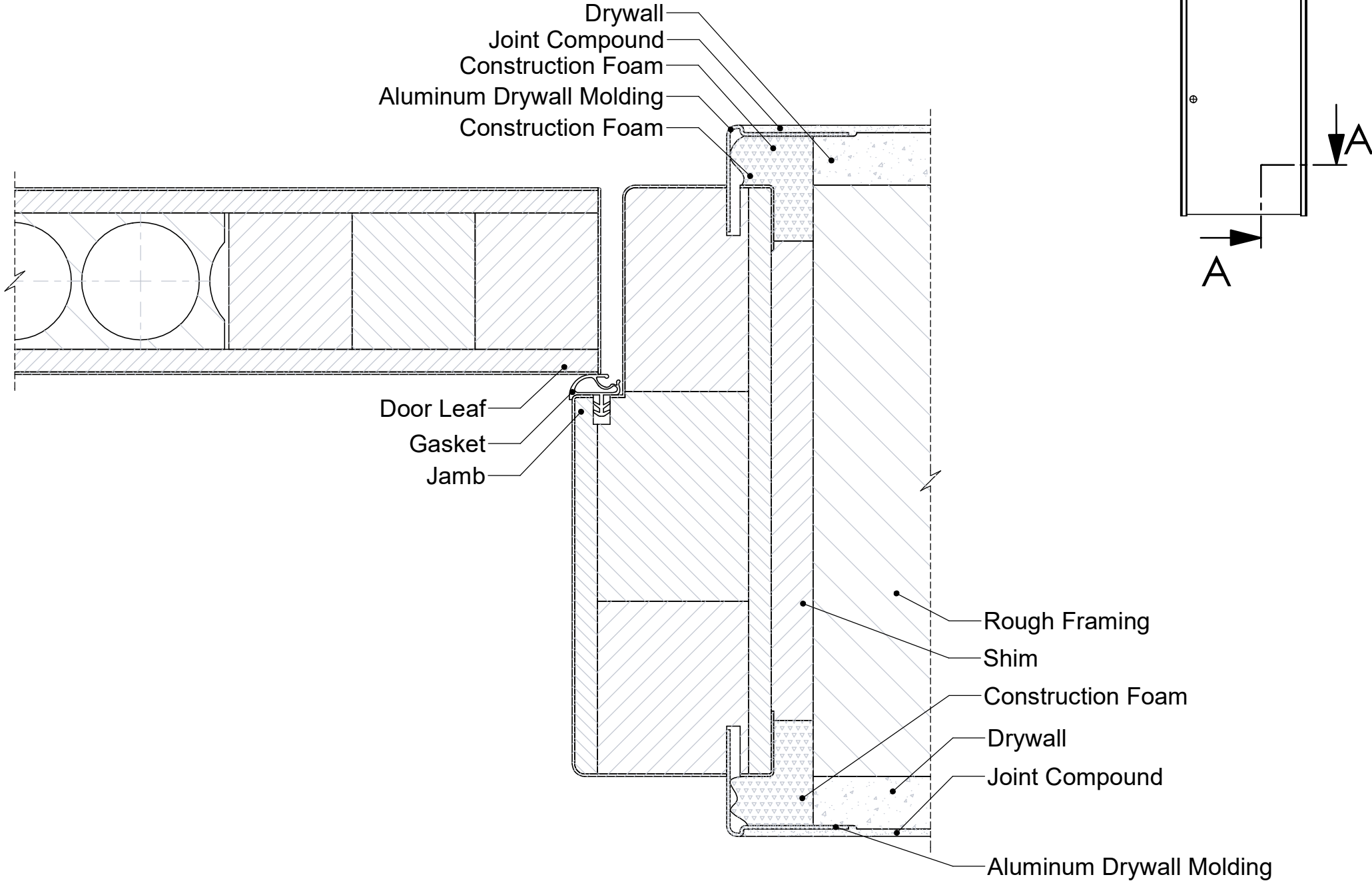
# In-Swing Door With L-Bead/ Z-Bead Jamb



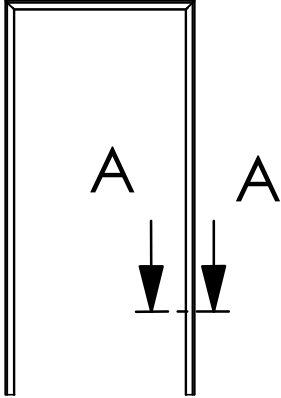
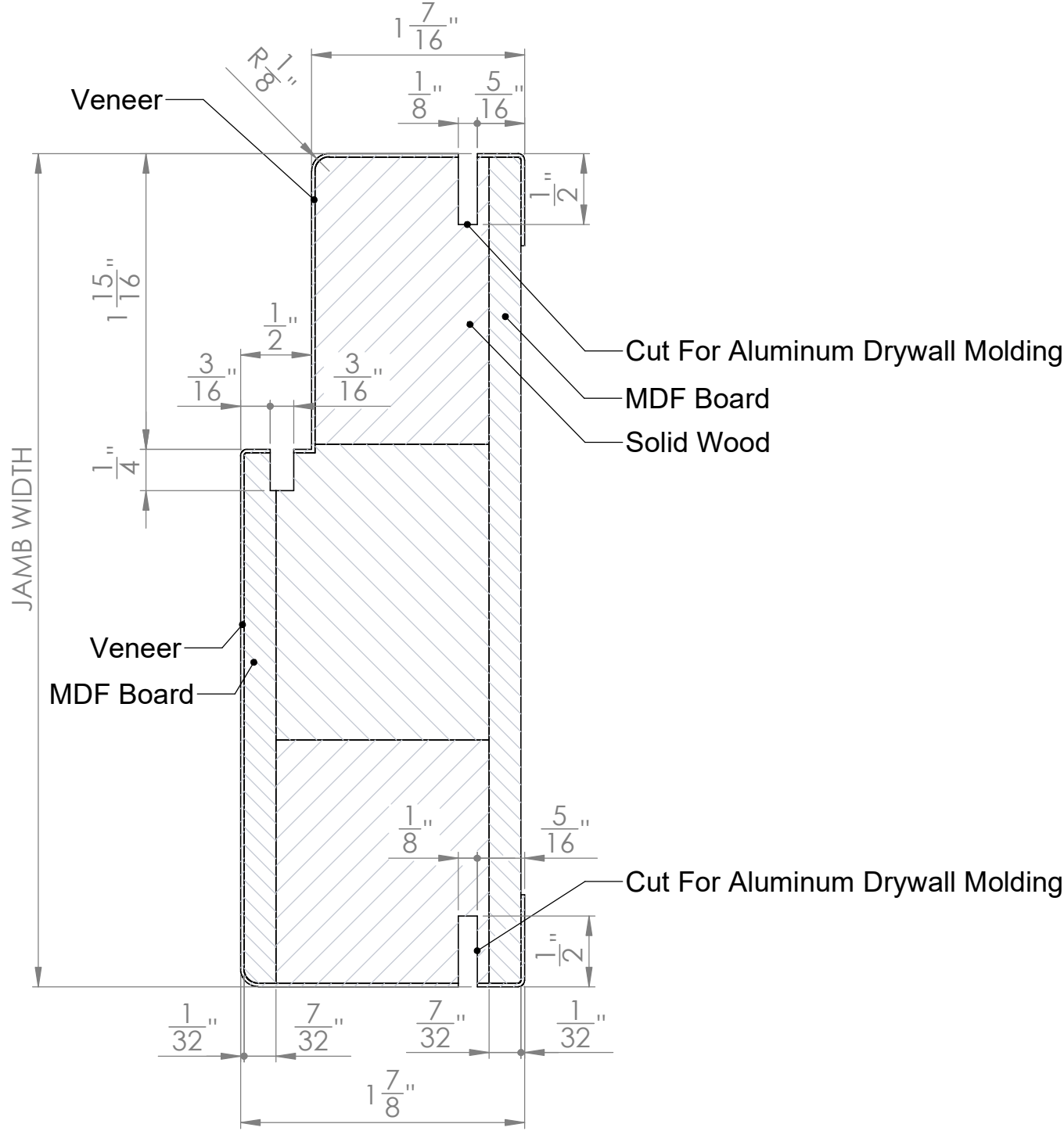
In-Swing Door With L-Bead Jamb - Installation Instructions



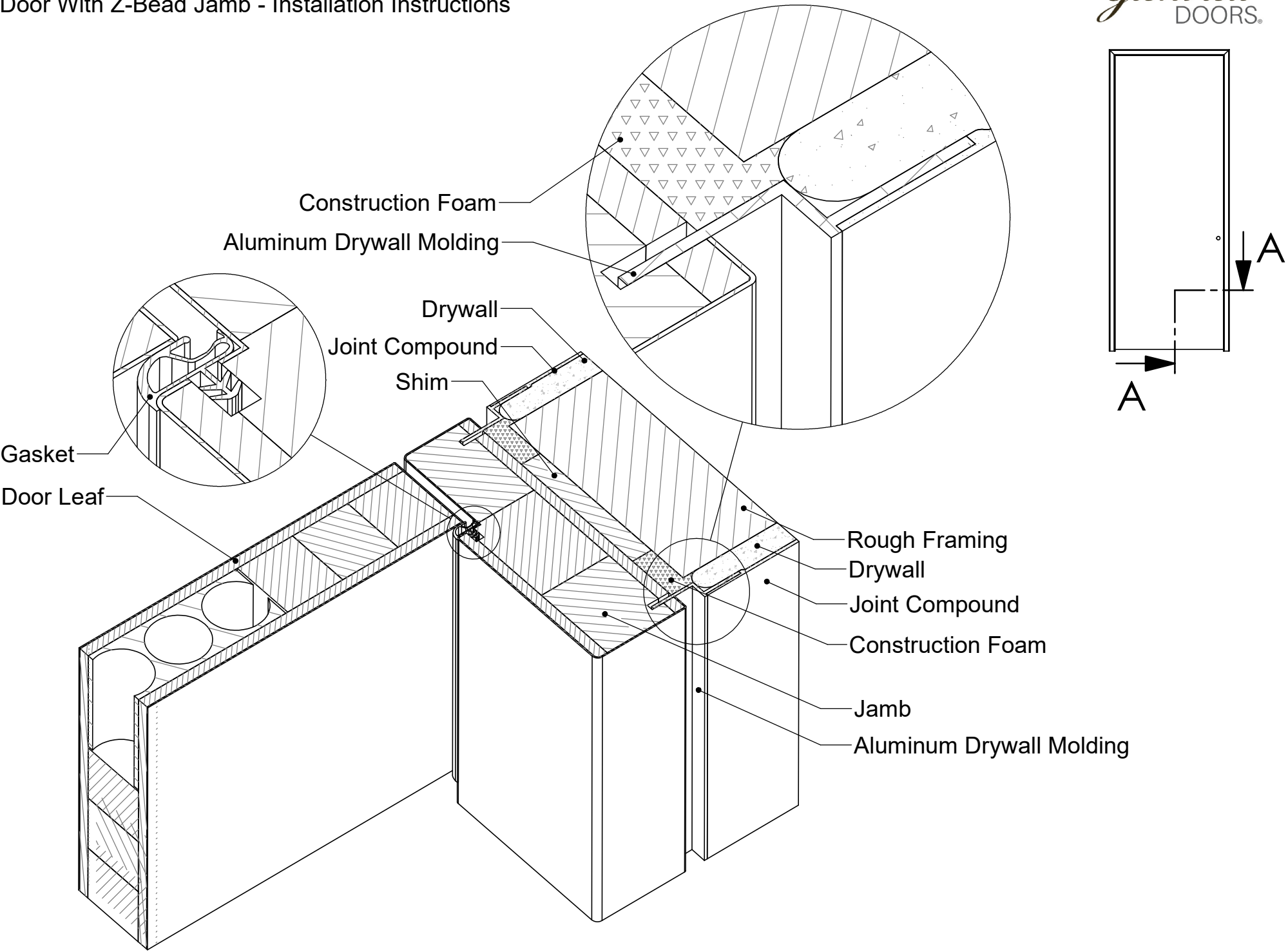
In-Swing Door With L-Bead Jamb - Installation Instructions



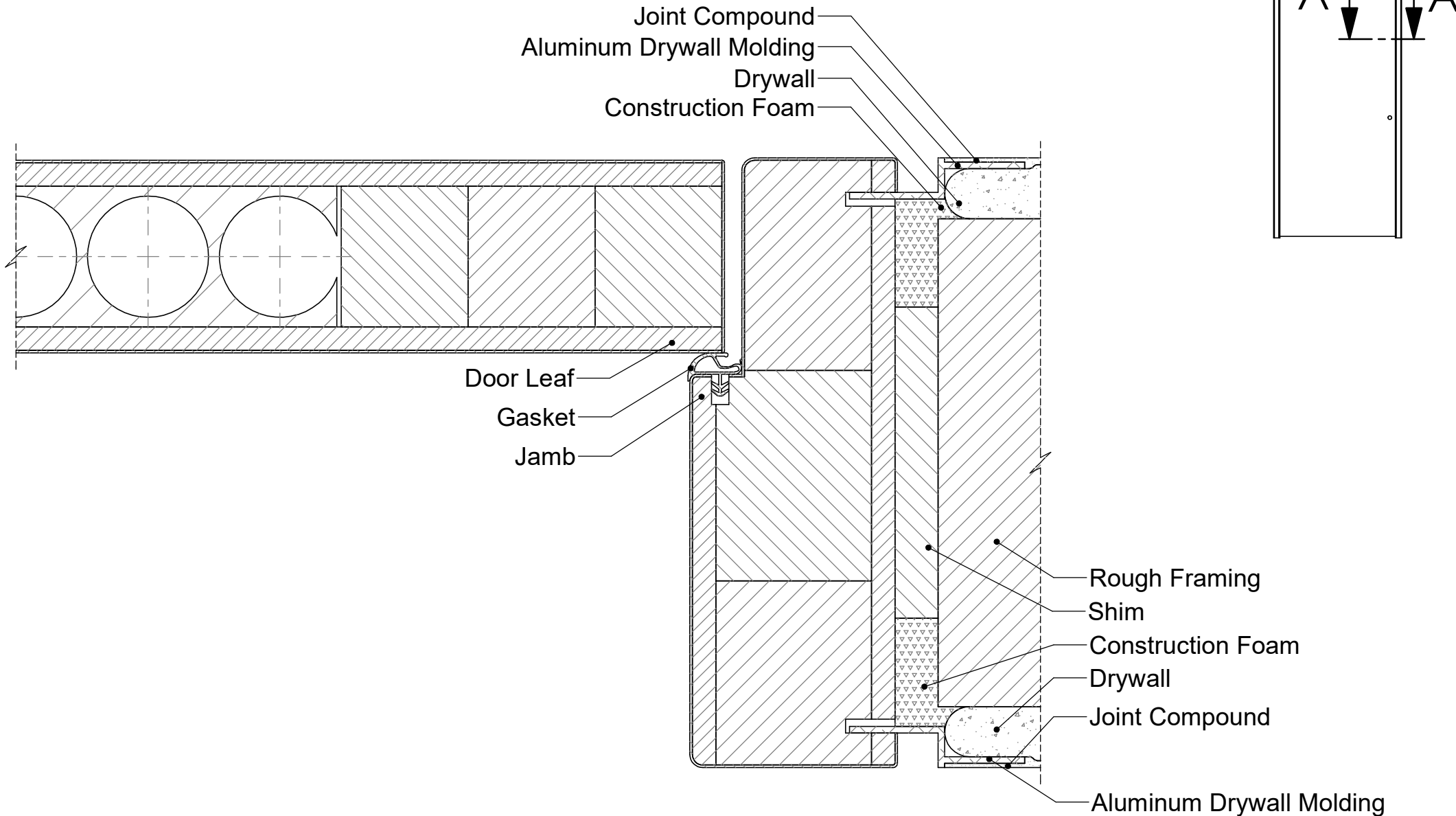
L-Bead Jamb Solid Core Structure



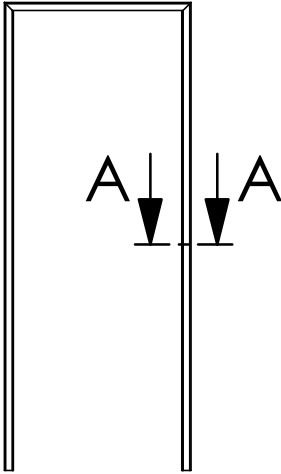
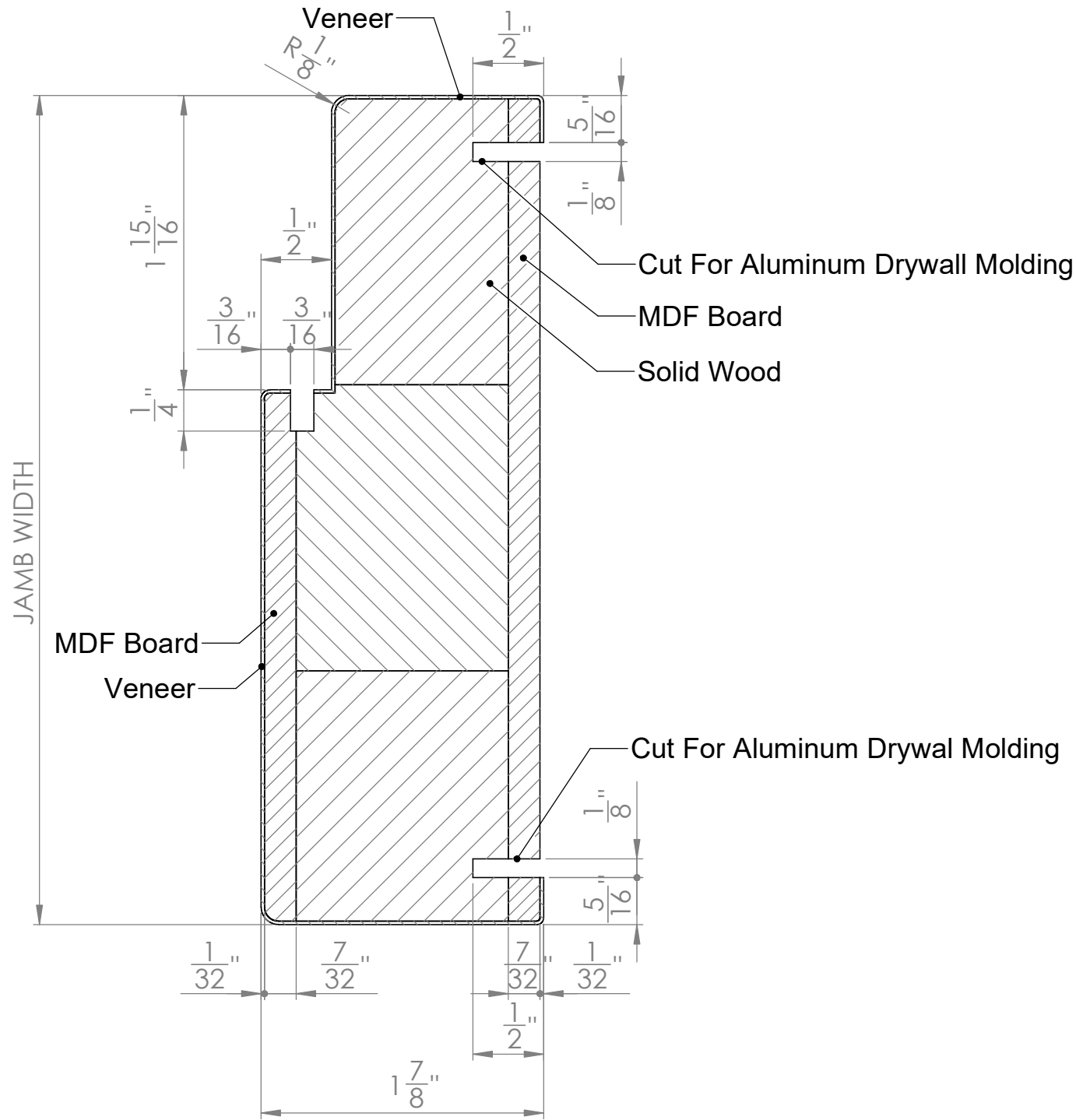
In-Swing Door With Z-Bead Jamb - Installation Instructions

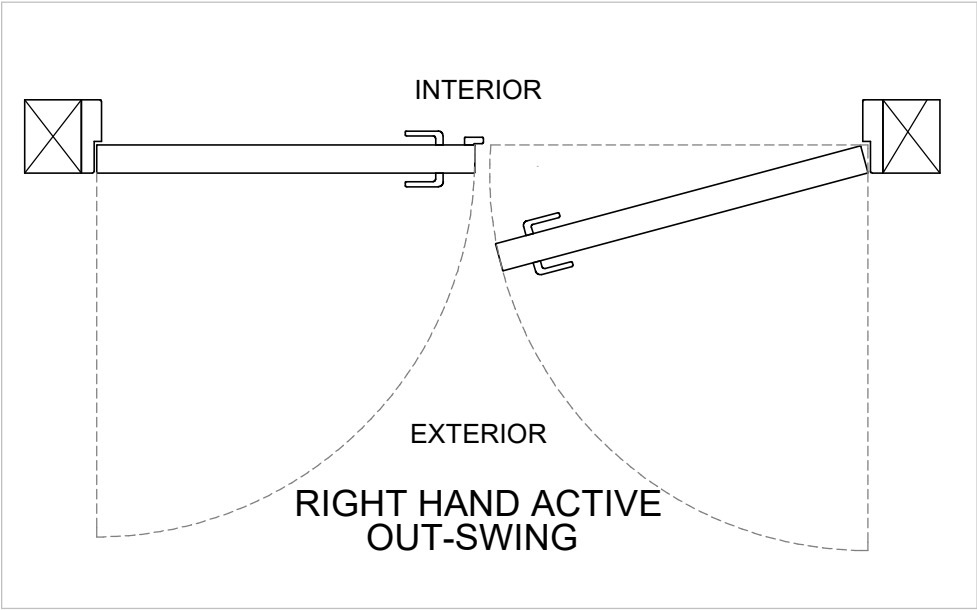
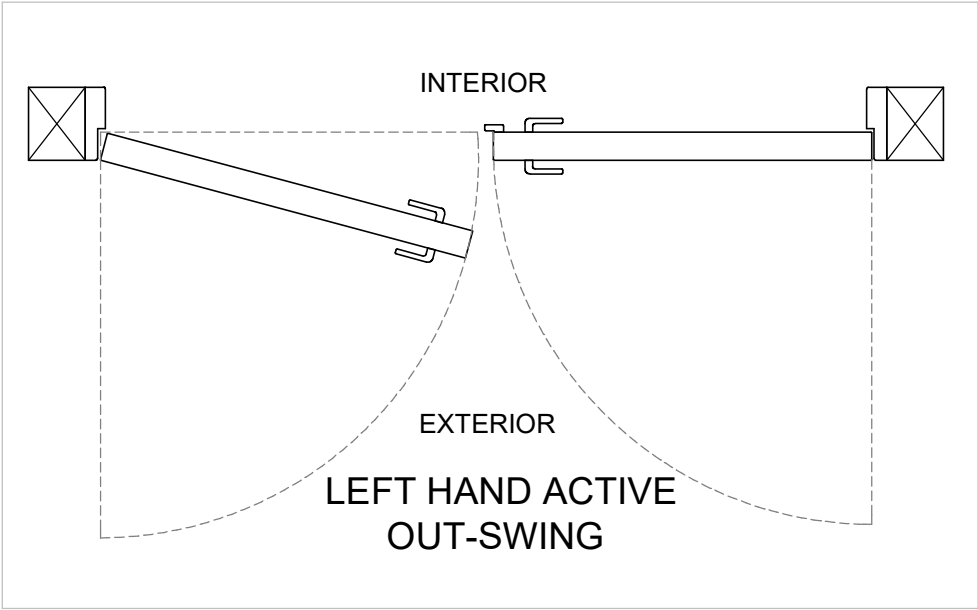
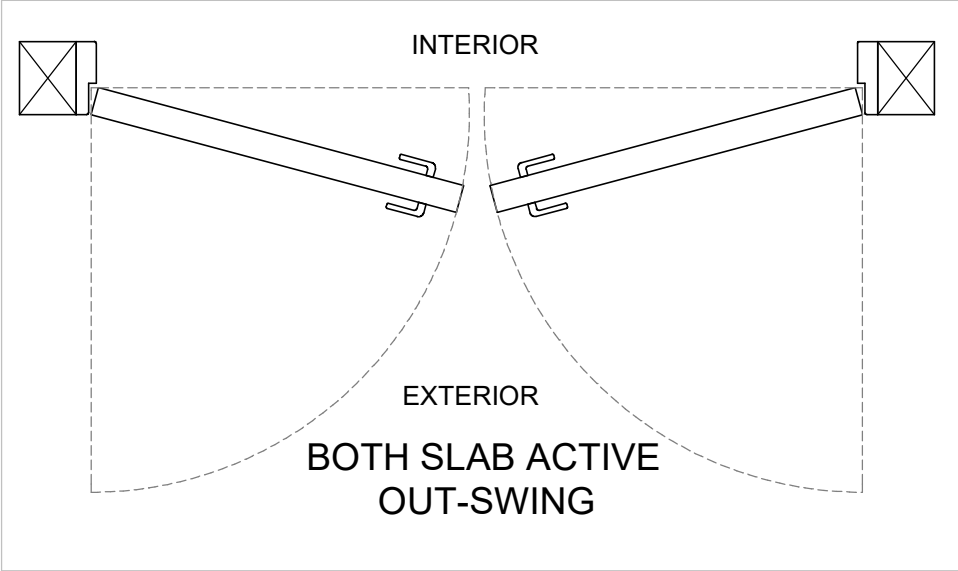
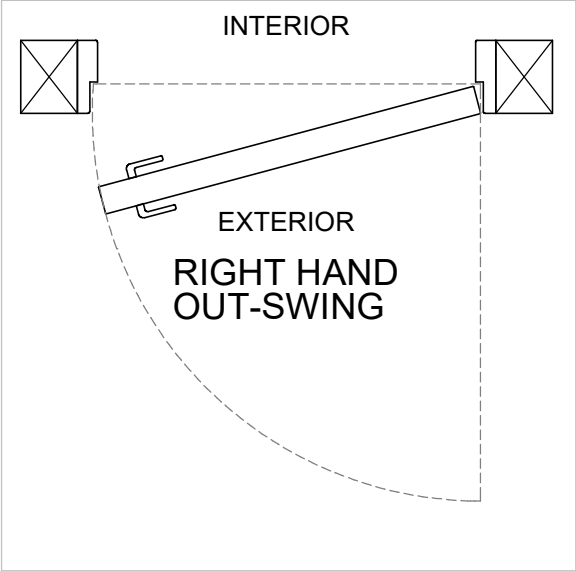
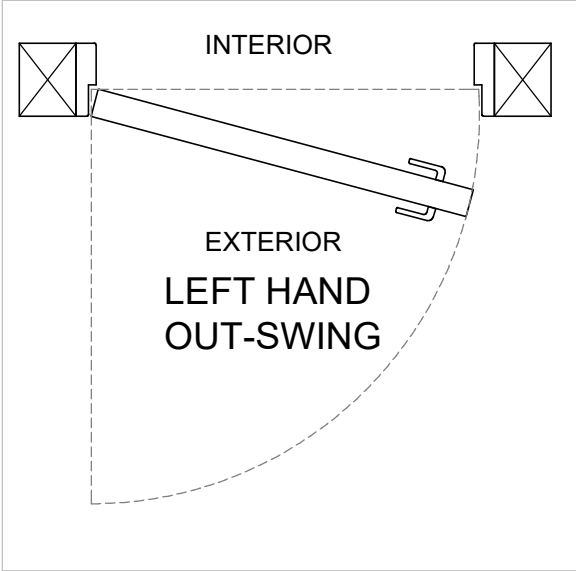


In-Swing Door With Z-Bead Jamb - Installation Instructions



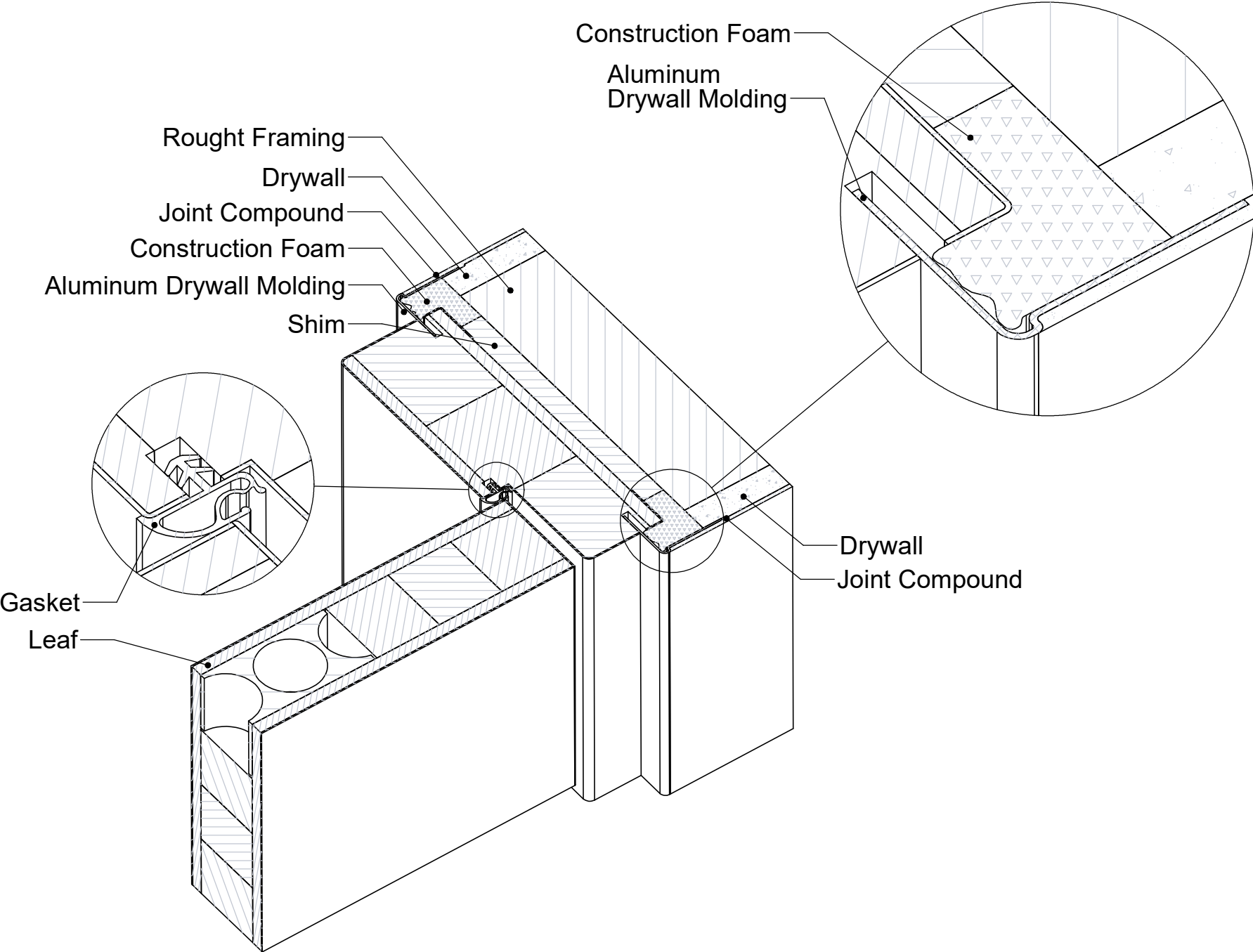
Z-Bead Jamb Solid Core Structure



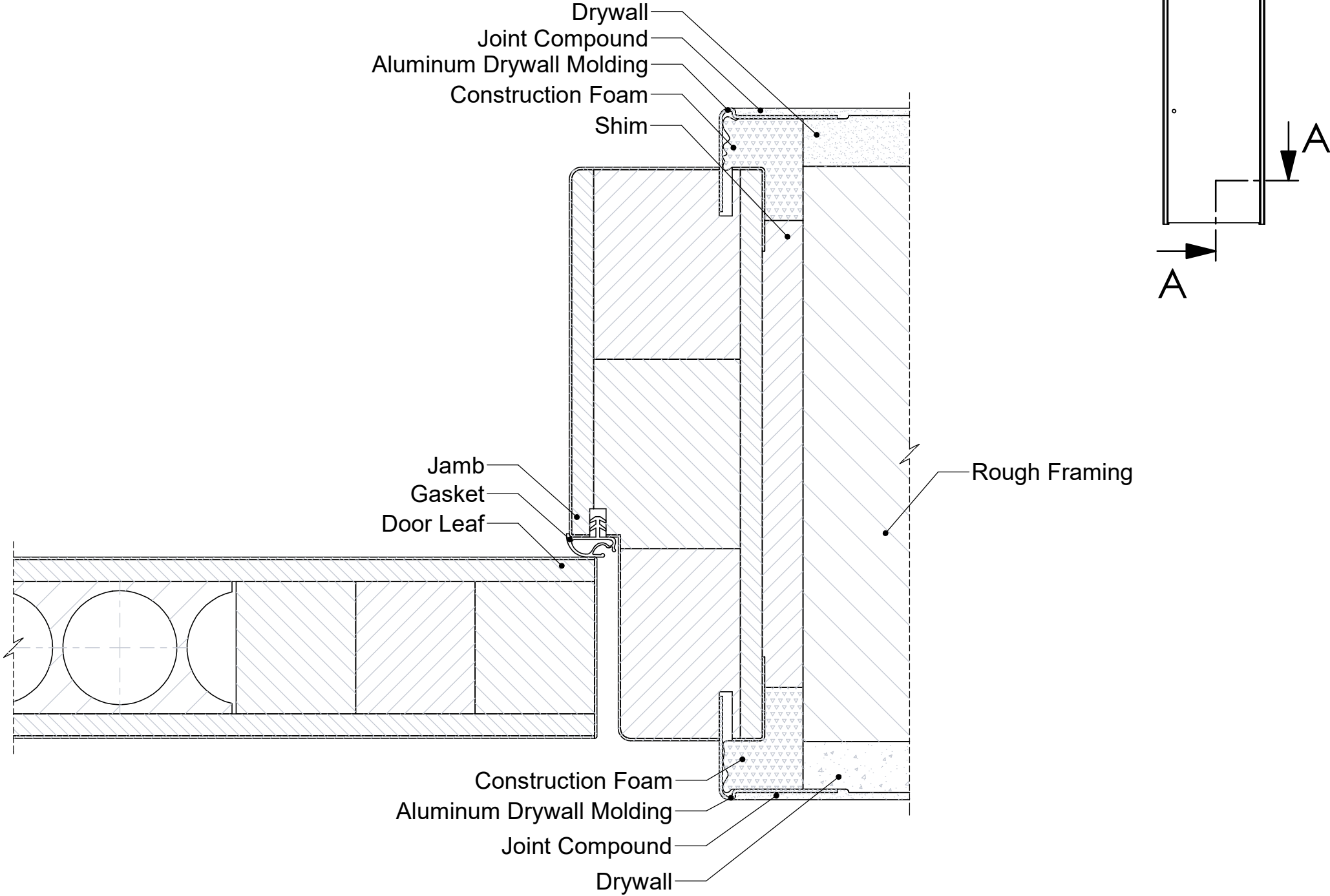




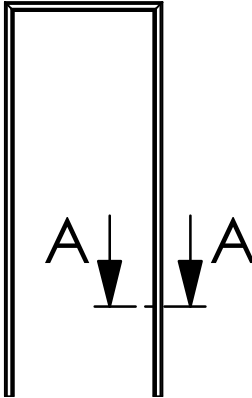
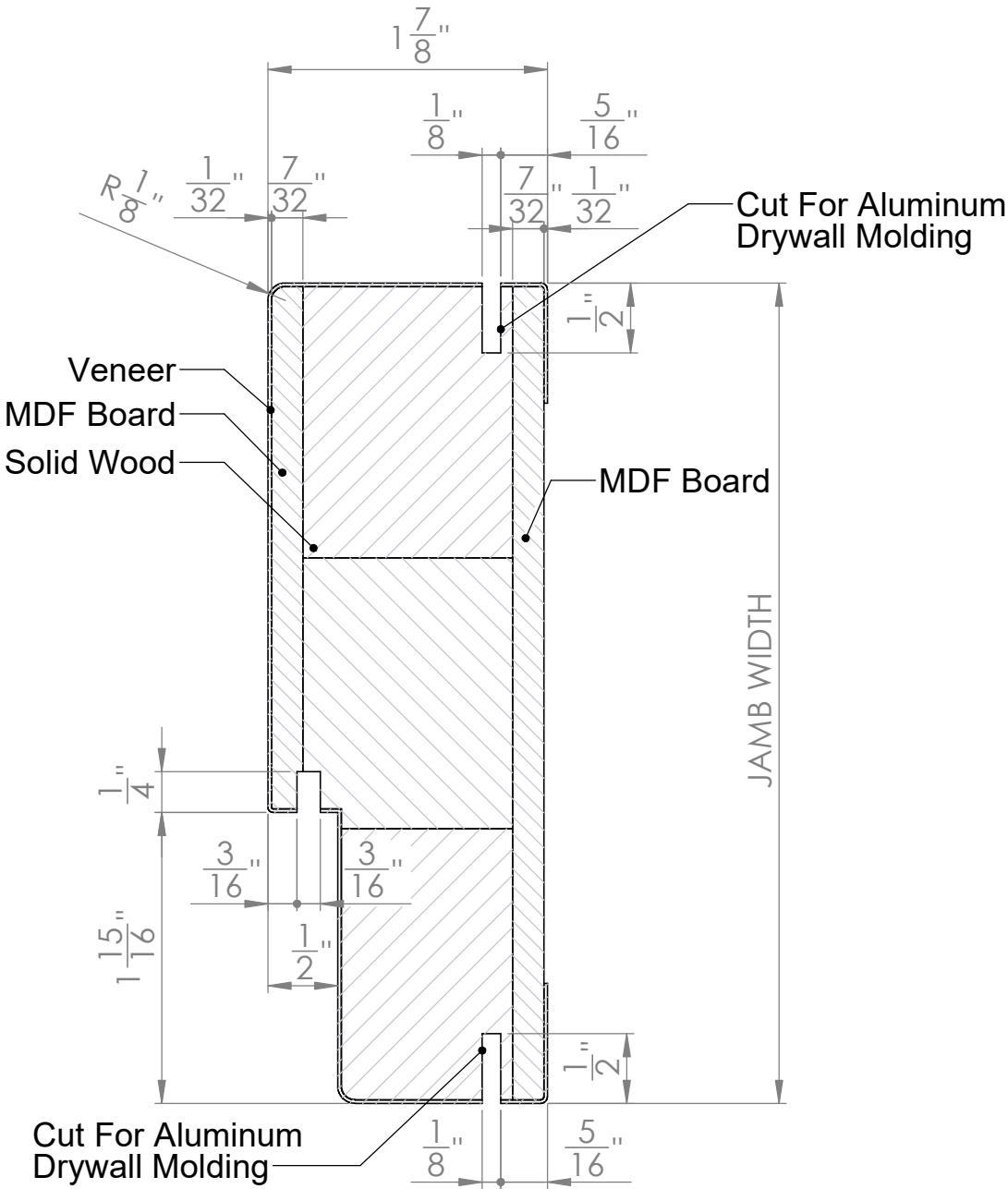
Out-Swing Door With L-Bead Jamb - Installation Instructions



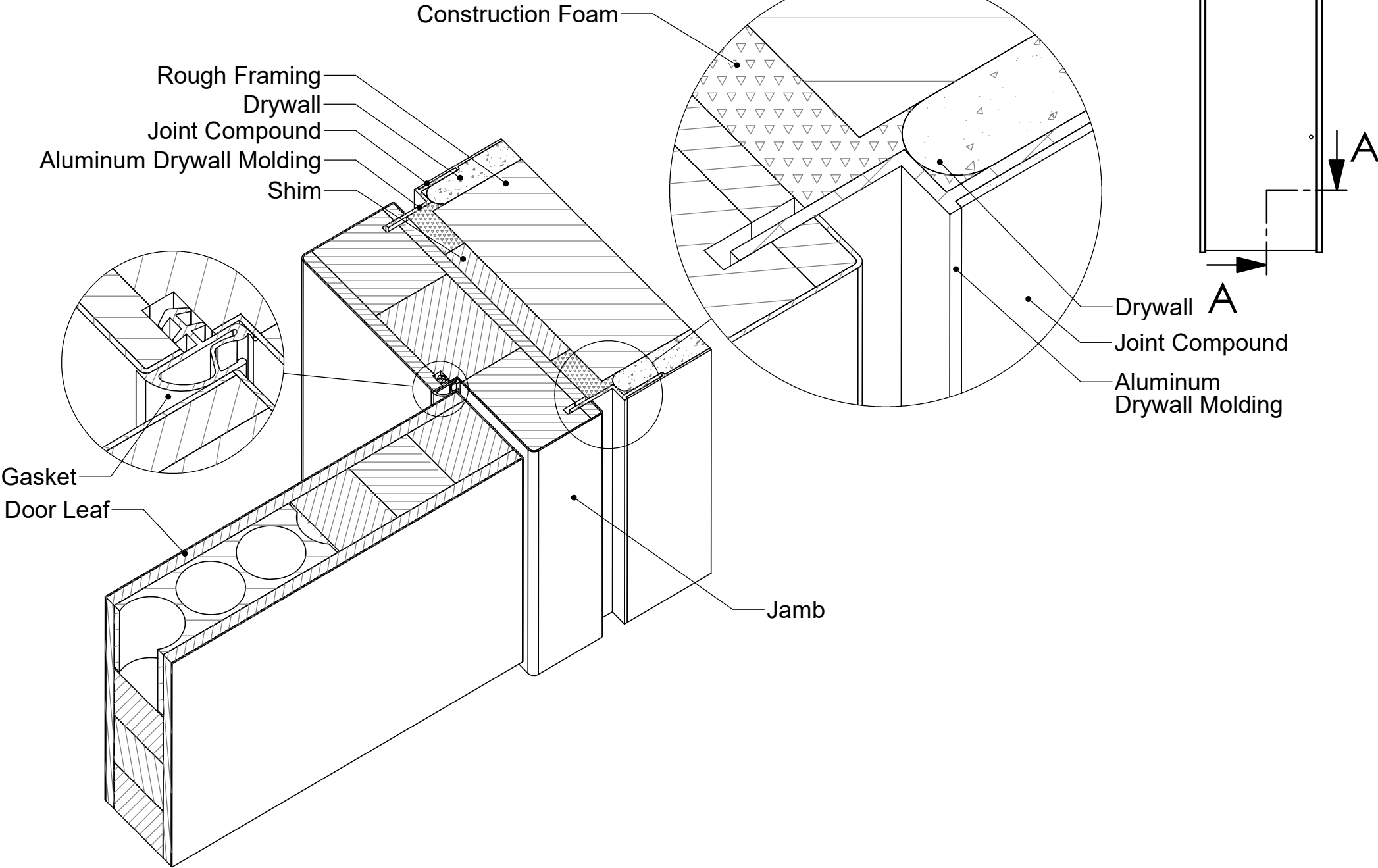
Out-Swing Door With L-Bead Jamb - Installation Instructions



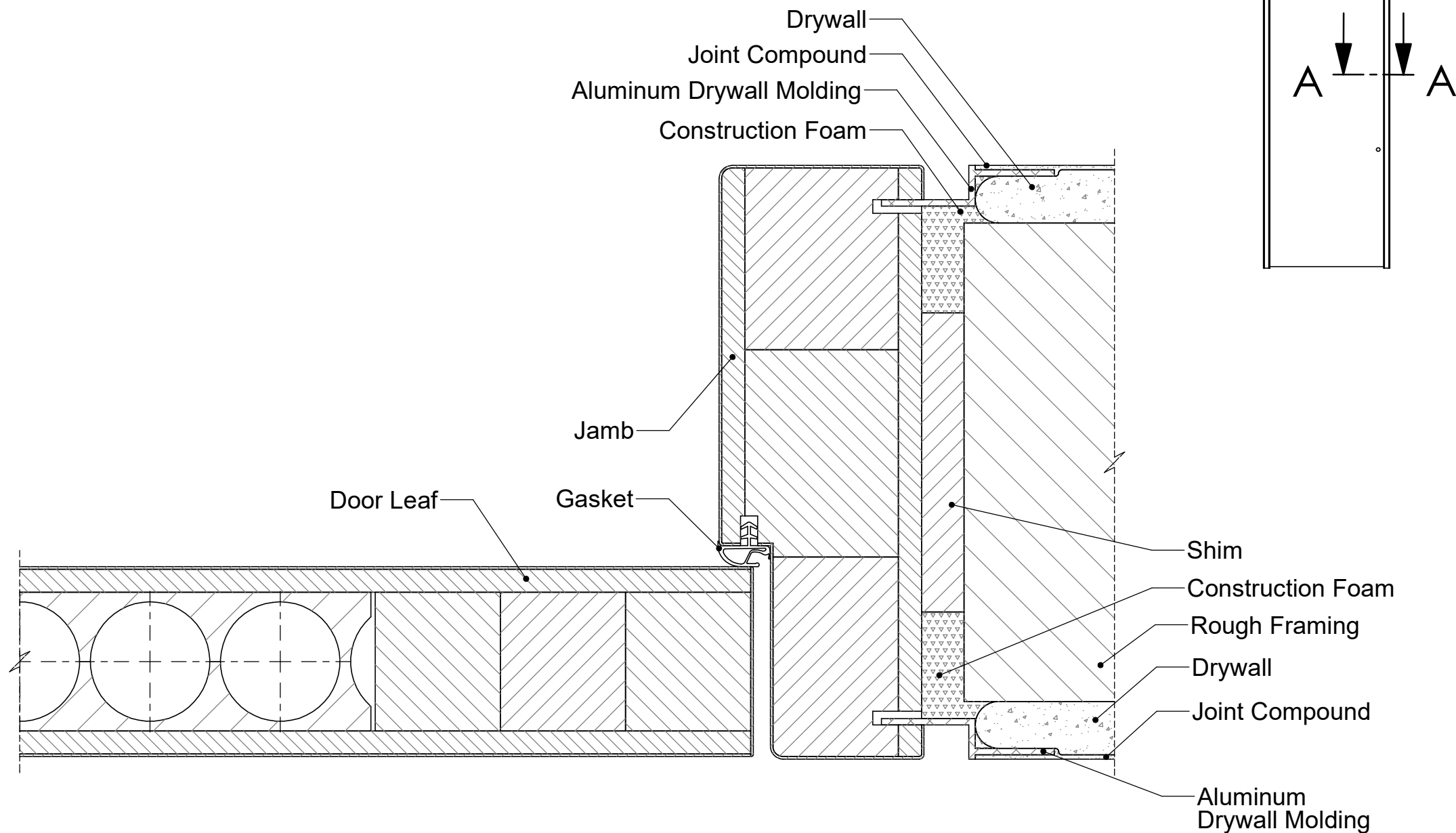
L-Bead Jamb Solid Core Structure



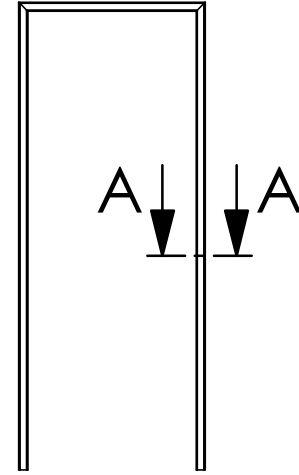
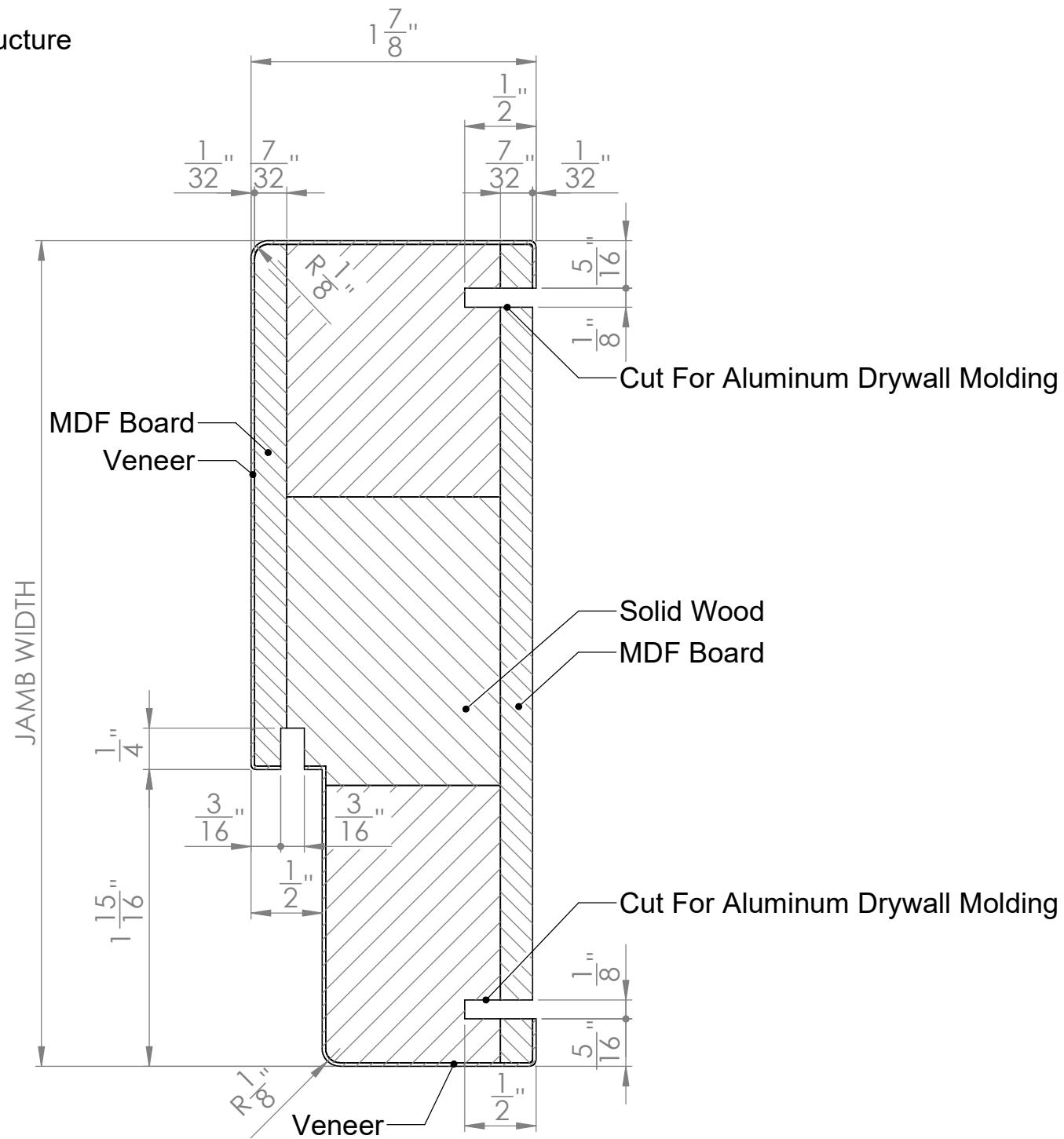
Out-Swing Door With Z-Bead Jamb - Installation Instructions



# Out-Swing Door With Z-Bead Jamb - Installation Instructions



# Z-Bead Jamb Solid Core Structure



# Leaf Solid Core Structure

